

SHOTCRETE MACHINE KHP20



Authorized Distributor
EXPLORE EARTH MOVERS PVT.LTD.
Kuleshwar-14, Kathmandu, Nepal
Mobile No.: 9801187056 / 9801181361
Email: admin@exploreintl.com.np
www.panchakanya.com

A trading wing of



It is suitable for sprayed anchor support operations in mine tunnels, hydro power stations and underground caverns.

High performance concrete pump

The pumping system has been verified in thousands of cases and has high reliability. The independently developed pumping mechanism has a suction efficiency of up to 95%, effectively reducing the switching impact and pressure by 20%. It is equipped with an automatic lubrication system to ensure stable operation of the pumping operation.



Pioneering telescopic boom

The spray boom has a maximum spraying height of 10 meters and a width of 16 meters. The boom can be flexibly extended, rotated, and pitched, and the positioning is precise. It adopts a three-stage telescopic four-section boom structure with a maximum telescopic stroke of 4m. A single stop can achieve large-depth spraying operations. It is equipped with a complete protection system and lubrication system, which can effectively reduce pollution and wear of the telescopic boom.



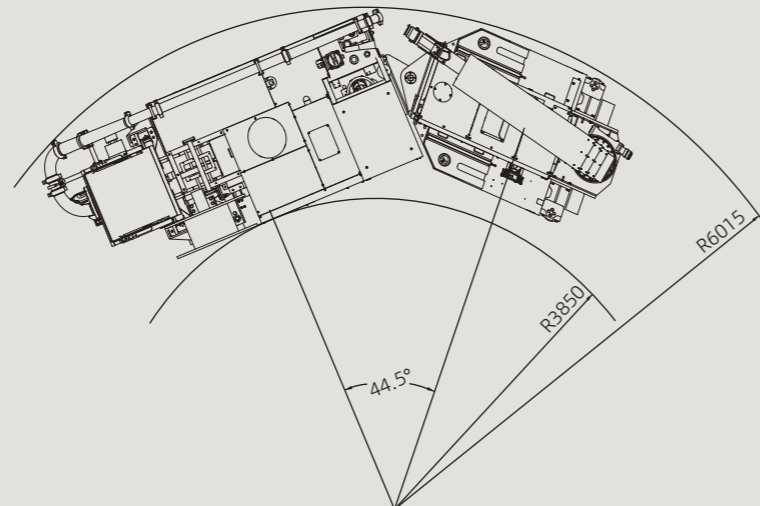
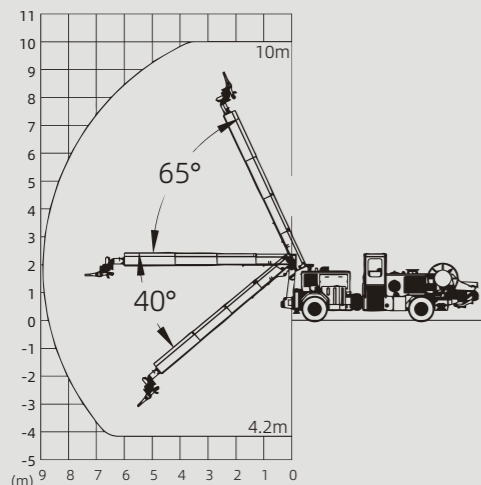
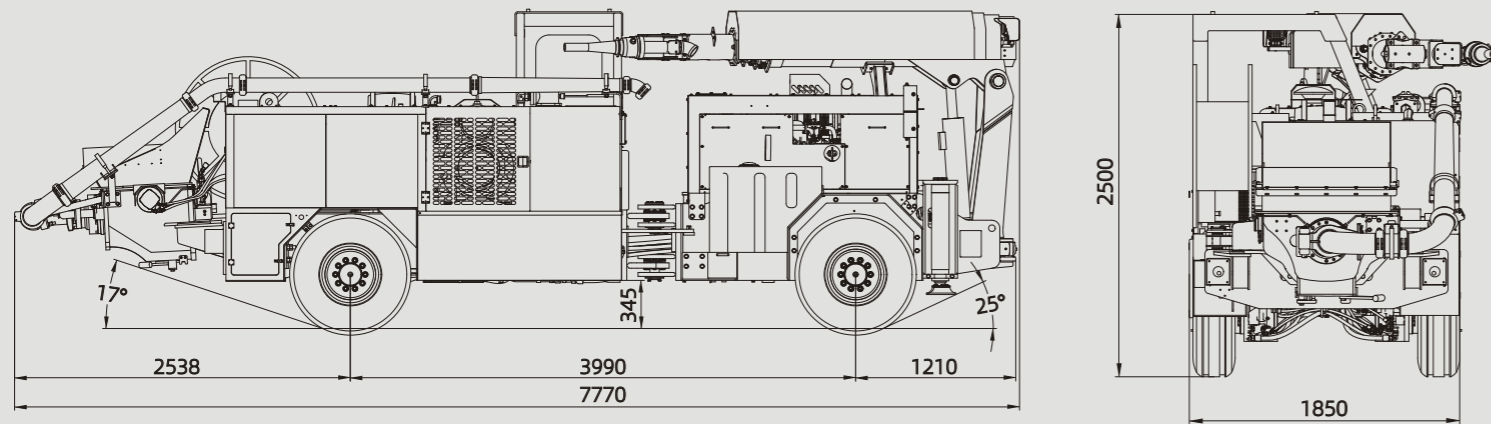
Wireless remote control operation

By controlling the handle, buttons, and switches on the remote control, hydraulic cylinders and motors can be operated to precisely control all movements of the robotic boom and the entire spraying process, making it easier for operators to work and improving safety.



Professional Service Offering

Uniroc's service solutions ensure that your equipment performs at its best throughout its life cycle. By combining genuine parts and Uniroc services from our certified technicians, we provide the highest quality technical support to ensure that your equipment continues to run efficiently and safely.



Main technical parameter	
Max. Theoretic output	20m ³ /h
Overall dimensions (L×W×H)	7770×1850×2500mm
Total weight	13500kg
Turning radius	Outer R6.015m /inner R3.85m
Max. speed	19km/h
Max. gradeability	18°
Engine power	129kW / 2200rpm
Electric power	103kW (Main motor 45kW + Air compressor 55kW+ Else 3kW)

Boom		
Boom structure	Swing boom+Telescopic boom	
Max. spraying height	10m	
Max. spraying width	16m	
Boom slewing angle	-90°~175°	
Boom pitch angle	-40°~65°	
Boom structure	4-section 3-stage telescopic boom	
Stroke	4000mm	
Nozzle	Horizontal axial rotation angle	360°
	Vertical axial tilt angle	240°
	Sweep angle	8° (Continuous)

Hydraulic system	
Drive method and power	Motor: 45kW
Rated pressure	23MPa
Hydraulic tank capacity	Approx. 200L

Cleaning system	
Driving type	Hydraulic driving
Max. output pressure	10MPa
Theoretic output flue.	20L/min
Water tank volumn	100L

Air compressor	
Motor power	55kW
Air supply	8.9m ³ /min
Air pressure	0.7Mpa

Electrical system		
Lights	Boom working light	2×48W , LED
	Hopper light	1×10W, LED
	Driving Light	4×48W (2 front ,2 rear), LED
Battery	2 x 120Ah , 12V	
External power supply requirements	380V , 50Hz (Standard) 660V , 50Hz (Optional)	
Control Type	Wireless remote control	

Carrier	
Engine type	4-Cylinder Water-Cooled Turbocharged Diesel Engine
Ground Clearance	345mm
Transmission	Hydrostatic drive, 4WD
Diesel tank capacity	90L
Wheelbase	3990mm
Tires	10.00L-15
Steering	Articulated Steering
Service brakes	Hydrostatic and positive braking
Parking and emergency brakes	SAHR type, fail safe wet disc brakes
Cab	Open cab with safe roof
Hydraulic outriggers	2 outriggers (front)
Chassis Lubrication	Centralized grease nipple lubrication(manual)

Pumping system	
Max. theoretical pumping cycles	26strokes/min
Max. Theoretic output	20m ³ /h
Max. aggregate dimension	16mm
Hopper capacity	0.3m ³
Concrete output pressure	7.5Mpa
Concrete delivery pipe diameter	φ125~φ80mm
Nozzle ID	φ45mm
Filling height	Approx. 1.36m
Pumping unit lubrication mode	Automatic lubrication

Additive pump system	
Driving type	Peristaltic Pump, Hydraulic Drive
Flow rate	600 L/h
Max. output pressure	12bar
Volume of additive tank	400L
Additive hose ID	Φ20mm

Cable reel	
Driving type	Hydraulic driving
Cable specifications	3×70+3×25/3
Cable length	80m

Options	
Engine Compartment Fire Suppression System (Automatic & manual)	
Engine Cold-Weather Heating System	
Reversing camera	
Wired Remote Control Operation	